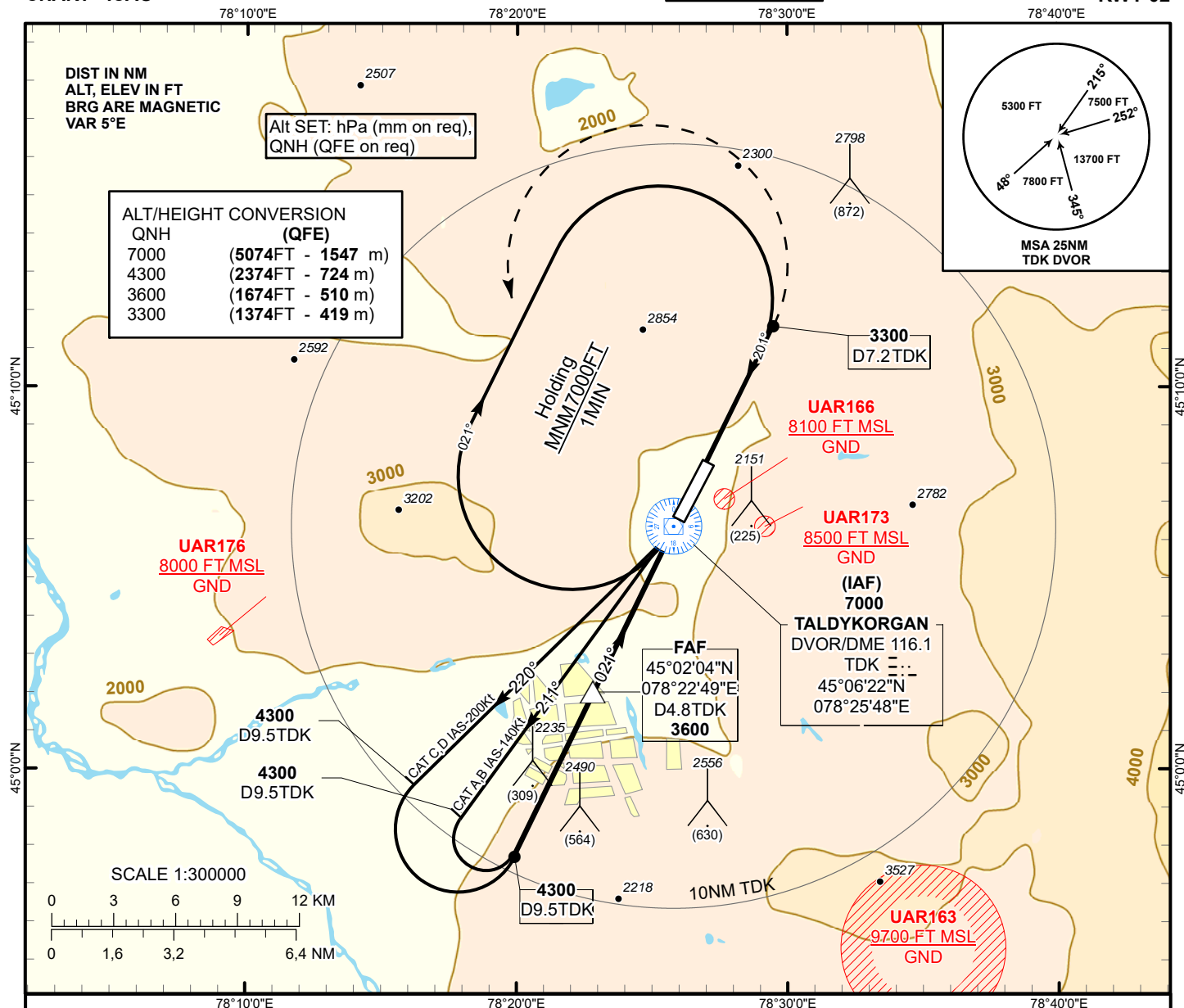
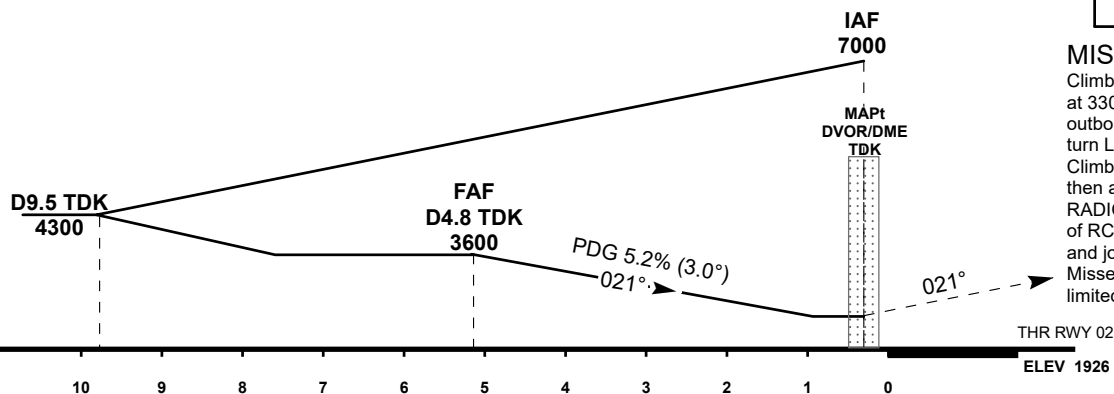


INSTRUMENT
APPROACH
CHART - ICAOAERODROME ELEV 1944 FT
HEIGHTS RELATED TO
THR RWY02 - ELEV 1926 FTTALDYKORGAN
TOWER 127.30TALDYKORGAN
VOR/DME Z
RWY 02TRANSITION ALT
10000

MISSED APPROACH

Climb on track 021°, at 3300 or above, outbound to D7.2 TDK, turn LEFT to TDK, Climb initially to 4300, then as directed by ATC.
RADIO FAILURE: in the case of RCF climb to 7000FT to TDK and join to holding pattern.
Missed approach turn speed limited to 240Kt IAS maximum.

Change: Recalc, renumbered.

Aircraft Category		A	B	C	D	DIST to THR	NM	5.1	4	3	2	1.1	
Straight-in Approach OCA/H						DME TDK	NM	4.8	3.7	2.7	1.7	0.8	
	VOR/DME	2360(440)	2360(440)	2360(440)	2360(440)	ALTITUDE	FT	3600	3249	2930	2612	2316	
						HEIGHT	FT	1674	1323	1004	686	390	
Aerodrome Operating Minima MDH ft x RVR(CMV)													
	VOR/DME					GS	Kt	80	100	120	140	160	180
						FAF-MAPT (4.8NM)	min:sec	3:36	2:53	2:24	2:03	1:48	1:34
						Desc.Rate(5.2%)	ft/min	420	530	630	740	850	960

TALDYKORGAN
VOR/DME Z AERONAUTICAL DATA TABULATION

VOR/DME approach to RWY02 from TDK DVOR/DME	
Fix/point	Coordinates
TDK DVOR/DME	45° 06' 22.3"N 078° 25' 47.6"E
TDK D4.8 (FAF)	45° 02' 04.2"N 078° 22' 48.6"E
THR RWY02	45° 06' 37.79"N 078° 26' 03.77"E
Final approach descent angle is 3°	